



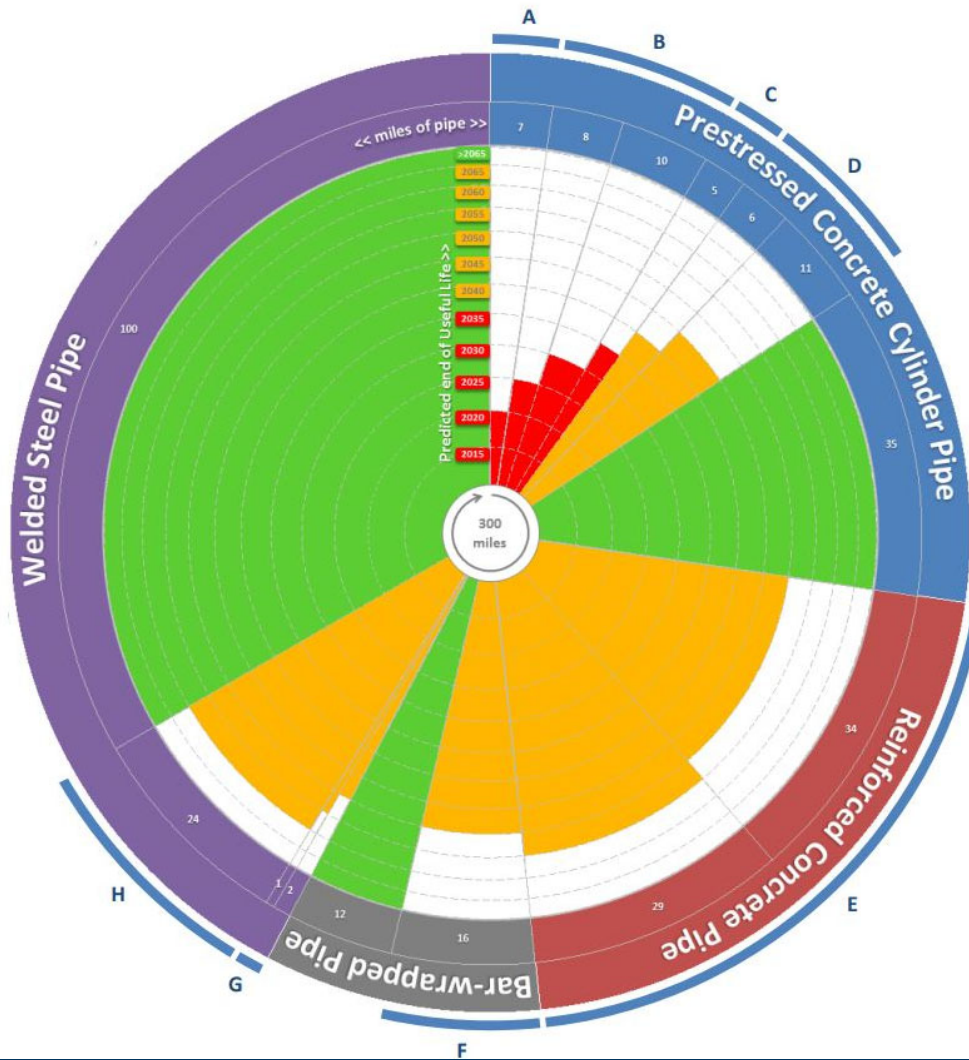
San Diego County
Water Authority

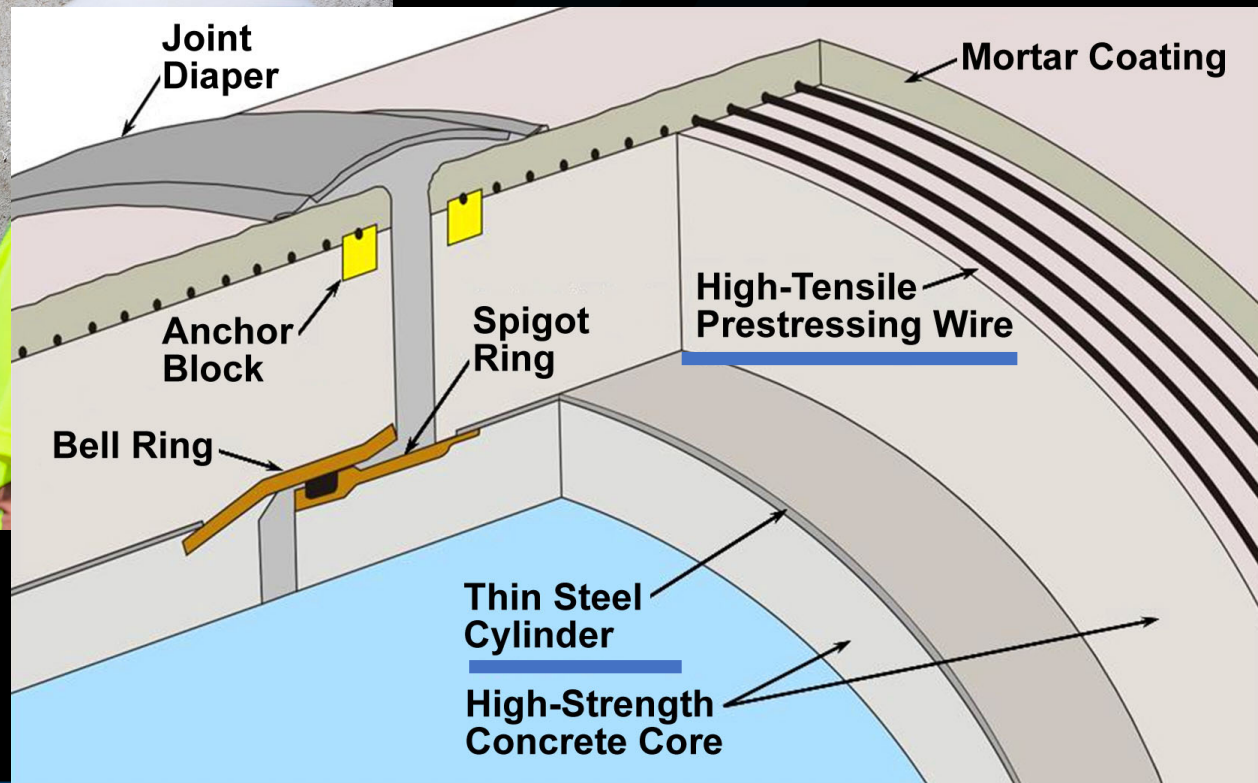
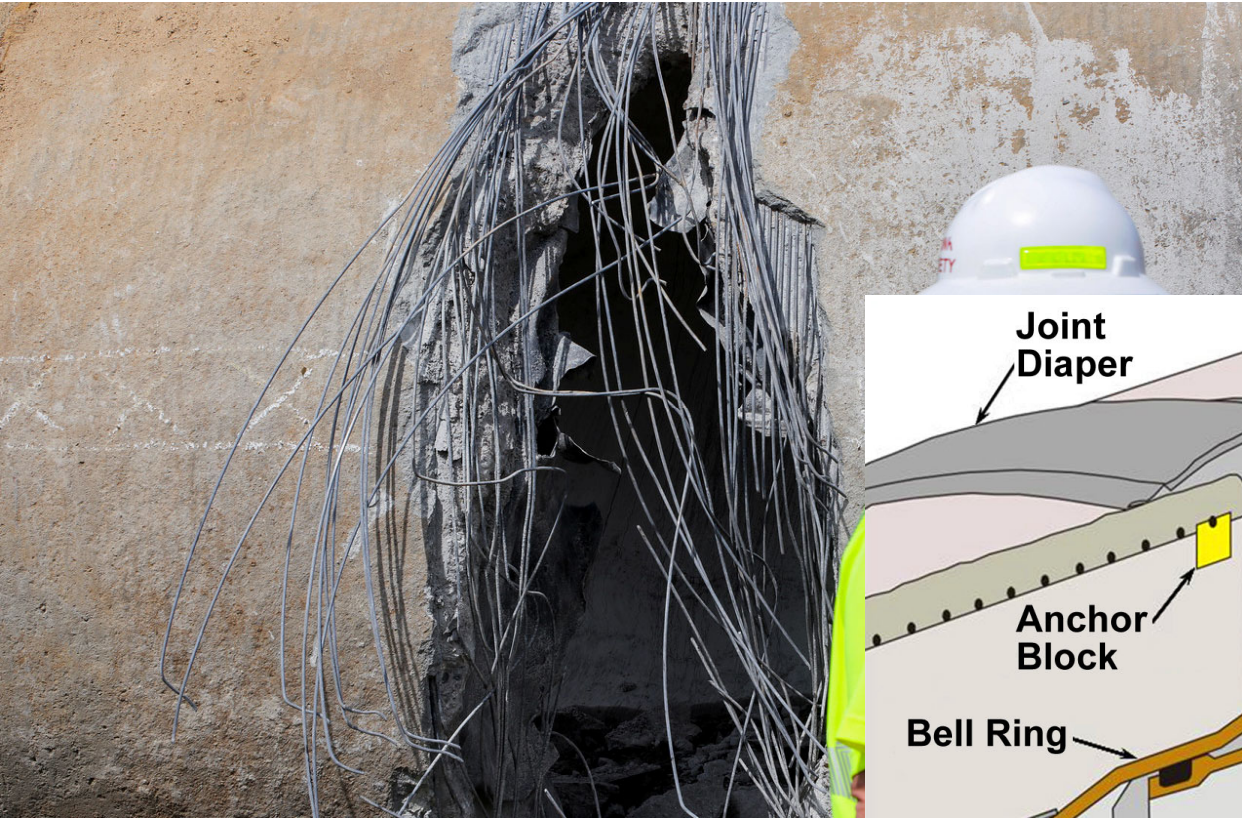


Pipeline 5 Relining San Luis Rey Canyon Project

Colin Kemper
Senior Engineer

July 16, 2024







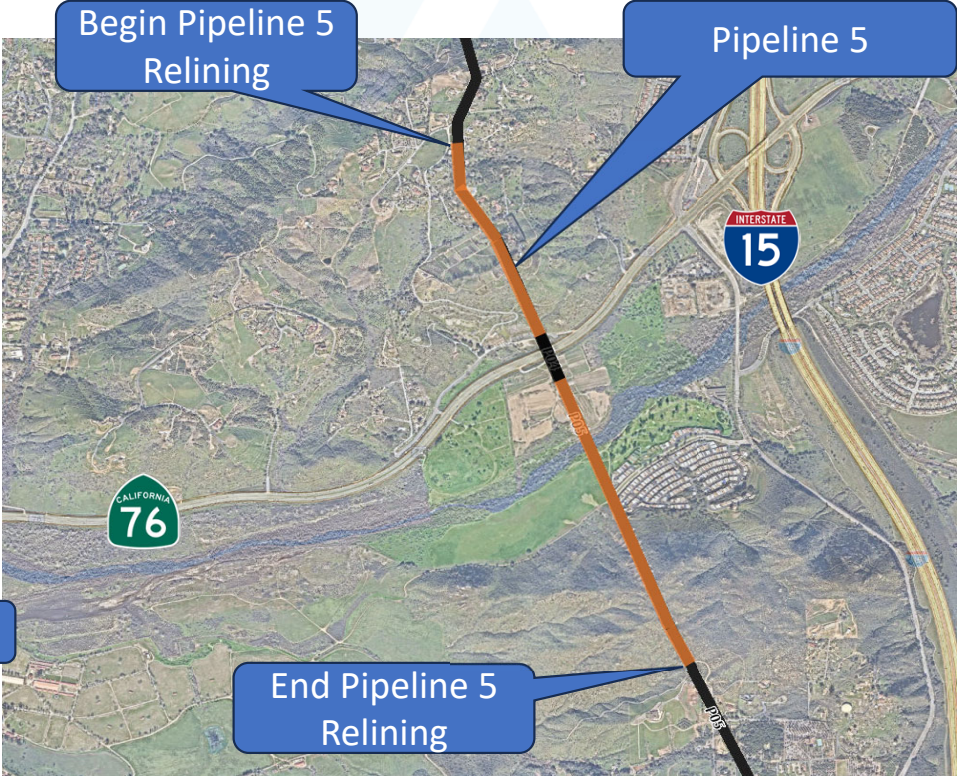
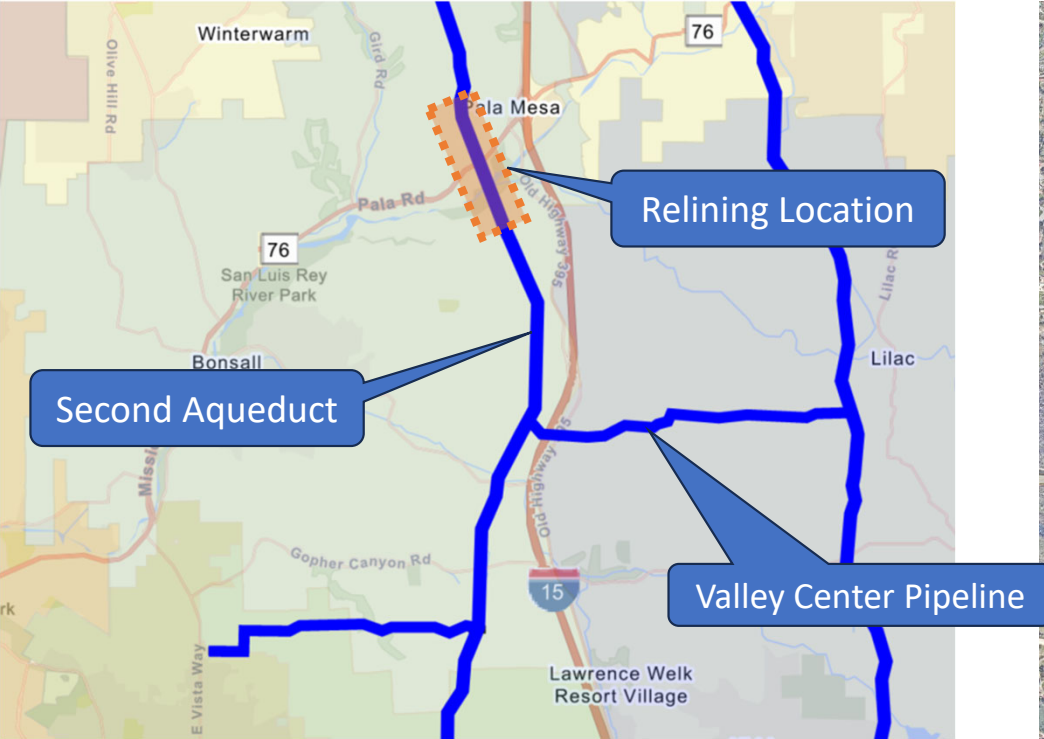
The Pipeline Relining Process



The Pipeline Relining Process



Project Vicinity and Location



Project Overview

- Approx. 9,000 linear feet
- Constructed in the early 1980s
- 96-inch Prestressed Concrete Cylinder Pipe (PCCP)



FBO

Portal

Pipeline 5

Rainbow Municipal Water District

Portal

CM Office and Laydown Area

Pala Rd



Slide 9

FBO Suggest making the color of Pipeline 5 different to highlight the section being relined.

Fountain, Brent, 2024-07-11T14:40:04.420

CKO 0 Updated

Kemper, Colin, 2024-07-15T14:47:35.556



FBO

Portal

Dulin Rd

Rancho Monserate

Portal

Pipeline 5

INTERSTATE
15

Slide 10

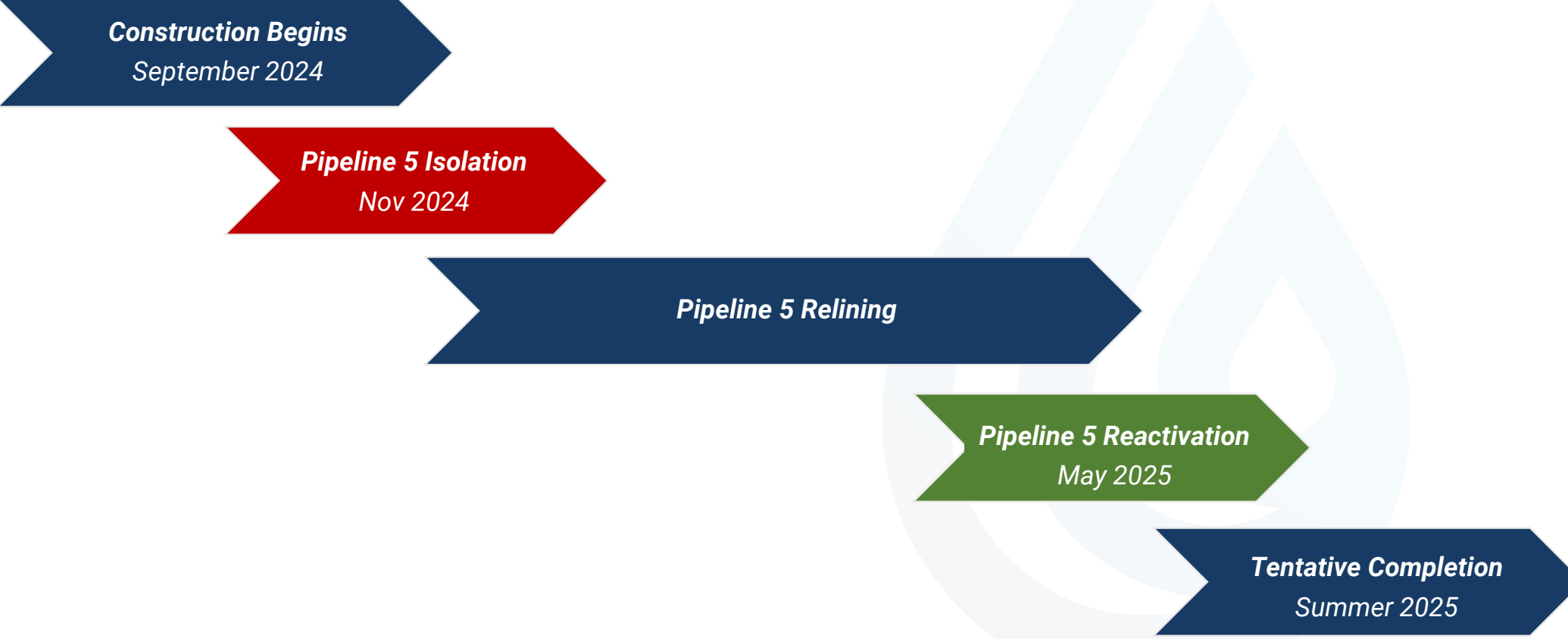
FBO Suggest making the color of Pipeline 5 different to highlight the section being relined.

Fountain, Brent, 2024-07-11T14:40:10.014

CKO 0 Updated

Kemper, Colin, 2024-07-15T14:47:30.946

Anticipated Construction Schedule



Construction Impacts



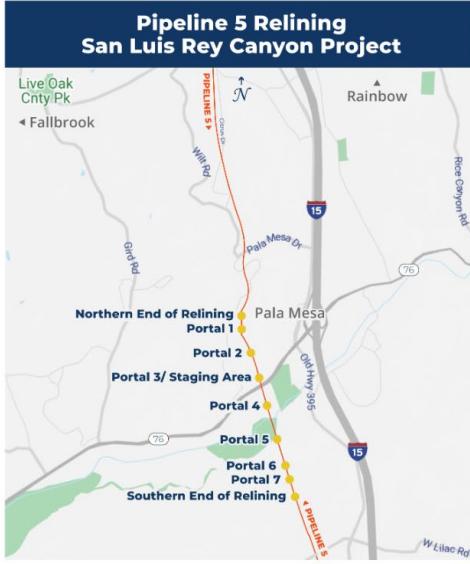
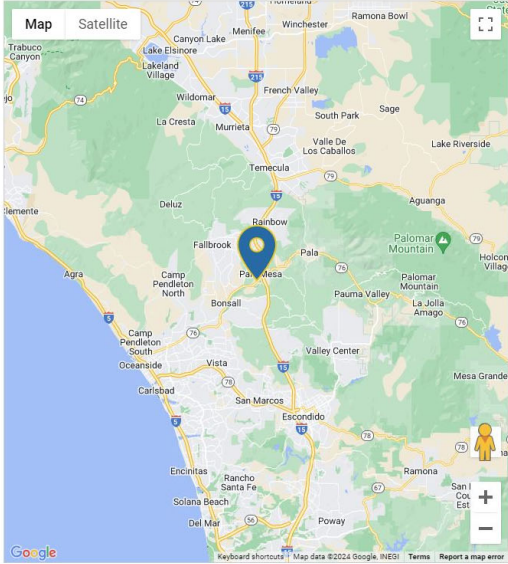
- Heavy machinery and construction crews on site.
- Work activity occurring Monday - Friday, 7 a.m. to 7 p.m.
- Saturday work may occur.
- 24-hour work during isolation and reactivation.

Community and Public Outreach

- 1-on-1 Stakeholder Outreach
- Interactive Project Map
- Direct Mail Postcard
- Media, Social Media, and Nextdoor
- Project Info Available in English/Spanish



Pipeline 5 Relining San Luis Rey Canyon



Slide 13

CK0 Waiting on picture from Craig,
Kemper, Colin, 2024-07-11T03:34:35.800

FB1 Suggest using the same terminology from the original slide, but only keep the bullets that apply to this project.
Fountain, Brent, 2024-07-11T14:41:30.296

CK1 0 Updated
Kemper, Colin, 2024-07-15T14:47:22.149

Thank You



<https://www.sdcwa.org/projects/pipeline-5-relining-san-luis-rey-canyon/>



877-682-9283, ext. 7005



CIPinfo@sdcwa.org



@sdcwa