



# RAINBOW

MUNICIPAL WATER DISTRICT

COMMUNITY NEWSLETTER  
JANUARY 2025 . ISSUE 242



## Where Does Your Water Come From? Imported Water Sources from Across California

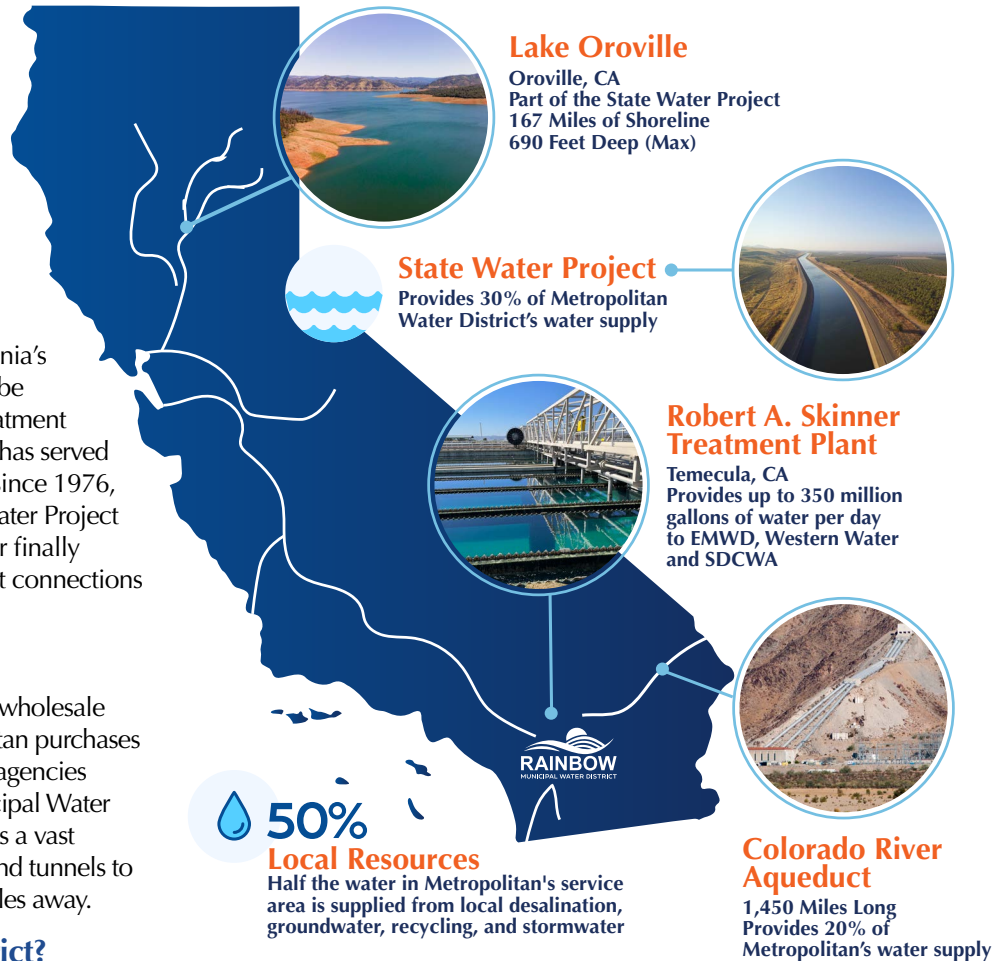
The water delivered to Rainbow Water's customers is imported from hundreds of miles away. Before water reaches your tap, it travels across two thirds of the state through Metropolitan Water District of Southern California's (Metropolitan) extensive distribution system to be treated at Metropolitan's Robert H. Skinner Treatment Plant in Temecula. The Skinner Treatment Plant has served as a portion of Rainbow Water's water supply since 1976, and receives a blend of water from the State Water Project (SWP) and Colorado River Aqueduct. The water finally makes its way to Rainbow Water through direct connections to Metropolitan's pipelines.

### Who is Metropolitan Water District?

Established in 1928, Metropolitan is the largest wholesale treated water supplier in the country. Metropolitan purchases and sells water to a cooperative of 26 member agencies in Southern California, including Eastern Municipal Water District. As a water wholesaler, Metropolitan has a vast system of water treatment facilities, pipelines, and tunnels to distribute the water it imports from over 500 miles away.

### Who is Eastern Municipal Water District?

The Eastern Municipal Water District (EMWD) is California's sixth-largest water agency. As a member agency of Metropolitan, EMWD purchases water from Metropolitan and sells it to retail customers and retail water agencies, including Rainbow Water. The water delivered to Rainbow Water via Metropolitan's pipelines is purchased through EMWD. EMWD charges Rainbow Water the Metropolitan wholesale rate plus a nominal administrative fee of \$12 per acre-foot. An acre-foot is 325,800 gallons or approximately equal to the amount of water it would take to fill a football field one foot deep.



### What is the State Water Project?

The California Department of Water Resources (DWR) manages the State Water Project, the country's largest state-owned and customer-financed water delivery system. The SWP spans 704 miles and delivers clean water to 30 million Californians through a complex system of canals, pipelines, and reservoirs. Rainbow Water benefits from the SWP, as it is one of the sources of water that is treated at the Skinner Treatment Plant and eventually delivered to Rainbow Water customers through a Metropolitan pipeline connection.



Take a virtual tour of the incredible journey your water takes to deliver from source to tap. Explore more with Metropolitan Water District's interactive map: [mwdh2o.com](http://mwdh2o.com)





2024 Art Contest winners: Ivy Shadzi "Every Last Drop" (left) and Selma Haven "Save It All" (right).

## 2025 Water Awareness Poster Contest

Rainbow Water is proud to announce the return of the Water Awareness Poster Contest. The contest is exclusive to 4th grade students who live or attend charter, homeschool, public, or private schools in the Rainbow Water service area. As part of Rainbow Water's ongoing commitment to serve the community through educational outreach, the contest is a water awareness activity that aims to inform students of our most precious natural resource. The theme for 2025 contest is "Love Water, Save Water" and students are encouraged to create an original artwork that exemplifies the importance of water in our communities.

The top three winners of the poster contest will be recognized with an award and art kit at the Communications and Customer Service Committee meeting in Summer 2025. The winning entries will then move on to the 34th annual regional art contest hosted by the North County Water Agencies (NCWA) and featured in the 2026 NCWA calendar.

Read more about the 2025 poster contest and view past winners at: [rainbowmwd.ca.gov/water-poster-contest](http://rainbowmwd.ca.gov/water-poster-contest)

### Contest Guidelines

**Forms:** The contest forms will be distributed to Bonsall and Vallecitos Elementary School fourth graders, and forms are available at the Rainbow Water office.

**Request a Form:** Email [pr@rainbowmwd.com](mailto:pr@rainbowmwd.com) to receive an entry form by mail.

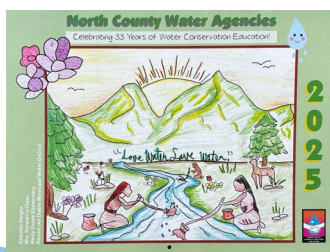
**Eligibility:** Students in 4th grade, who live or attend charter, homeschool, public, or private schools in the Rainbow Water service area.

**Art Requirements:** One entry per fourth grade student, art must be an original drawing with use of crayons, colored pencils, markers, and/or paint. Posters with copyrighted characters or computer generated artwork will be disqualified.

**Art Deadline:** Friday, April 4, 2025

### Submissions:

- Drop off or mail to Rainbow Municipal Water District, Attn. PR Dept. 3707 Old Highway 395, Fallbrook, CA 92028
- Entries can be returned to fourth grade teachers at Bonsall and Vallecitos Elementary Schools.



### 2025 Calendars

For a limited time, 2025 Water Awareness Calendars are available to the public at the Rainbow Water office.



## Public Safety Power Shutoffs in the Region

Southern California is experiencing atmospheric weather changes due to La Niña conditions which equate to less precipitation resulting in dry landscapes that lead to excess plant fuel for wildfires. Extreme weather patterns including the recent red flag windstorms have resulted in power utilities exercising Public Safety Power Shutoff (PSPS) to immediately reduce the risk of wildfires from strong winds and low humidity. Utility companies including San Diego Gas and Electric (SDGE) and Southern California Edison can decide when and where to shut off customer power as a preventative fire measure.

### Rainbow Water Prepares for Power Outages

Rainbow Water utilizes power from SDGE to pump, move, and deliver water to all customers in the service area. When a PSPS event warning is received from SDGE, Rainbow Water crews proactively fill water tanks to increase storage and prepare backup generators at pump stations. Rainbow Water works tirelessly 24 hours a day, 7 days a week to provide water services and collaborates with North County Fire Protection District, San Diego County Sheriff's Department, and neighboring water agencies to reduce the risk of emergencies that impact the water supply.

### Stay Informed

- Find the most recent PSPS events and community resources on the SDGE website: [sdge.com/psps-dashboard](http://sdge.com/psps-dashboard)
- Update your Rainbow Water emergency contact information to receive notifications for outages and emergency events: [rainbowmwd.ca.gov/update-your-info](http://rainbowmwd.ca.gov/update-your-info)
- Download the Genasys and Watch Duty emergency alert apps used by Rainbow Water and North County Fire Protection District. Read more about the apps and emergency alert information on the Rainbow Water website: <https://tinyurl.com/rzcdz3hy>

### Preparation Tips for PSPS Events

Visit the Rainbow Water website for PSPS event information and preparation tips including who to call for downed power lines and how to prioritize water use.

[rainbowmwd.ca.gov/public-safety-power-shutoffs](http://rainbowmwd.ca.gov/public-safety-power-shutoffs)

3707 Old Highway 395, Fallbrook, CA 92028  
 Customer Care & After Hours: 760.728.1178  
 Office Hours: Mon-Fri 8:00 a.m. - 4:30 p.m.  
**RAINBOWMWD.CA.GOV**