



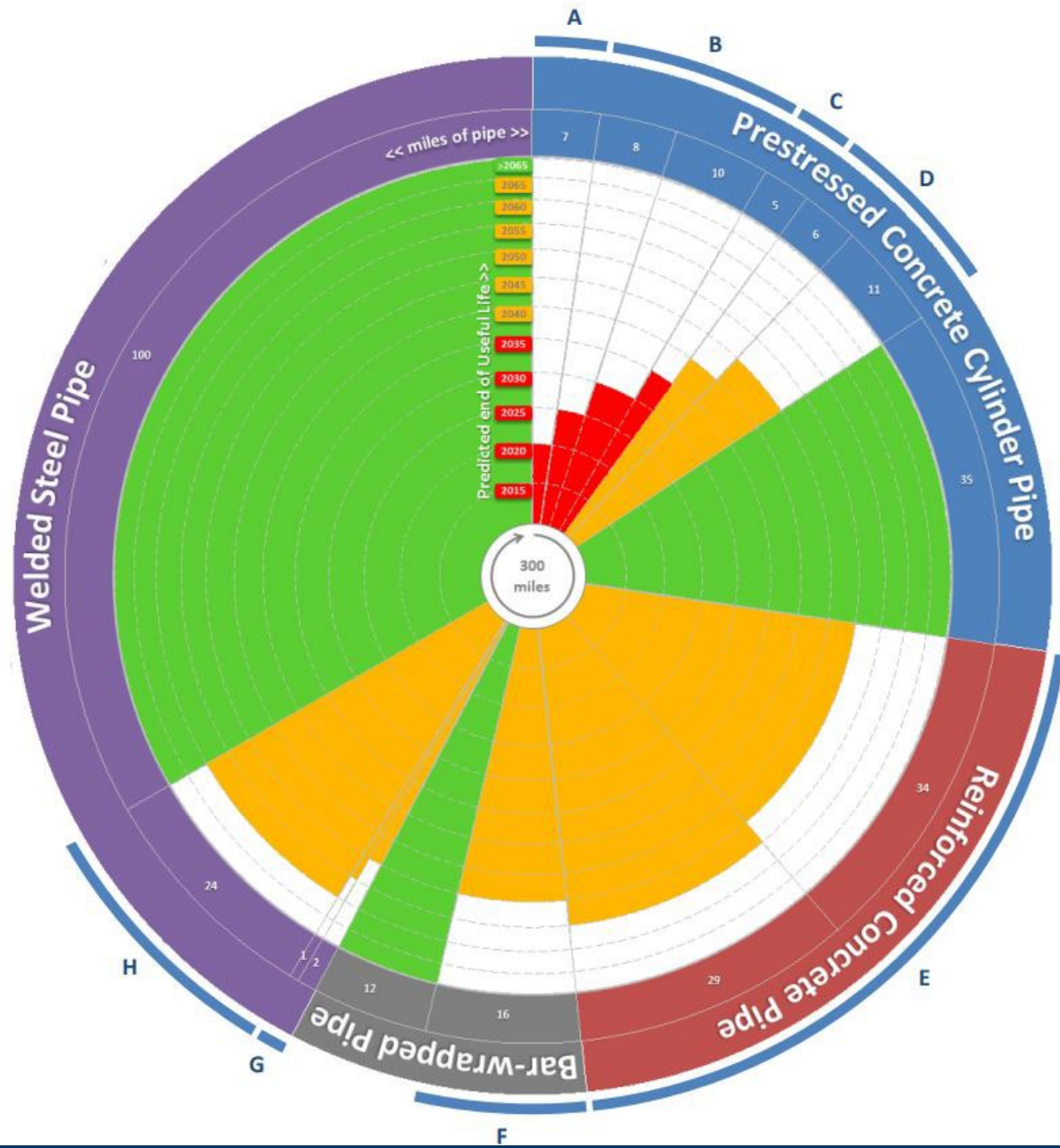
San Diego County
Water Authority

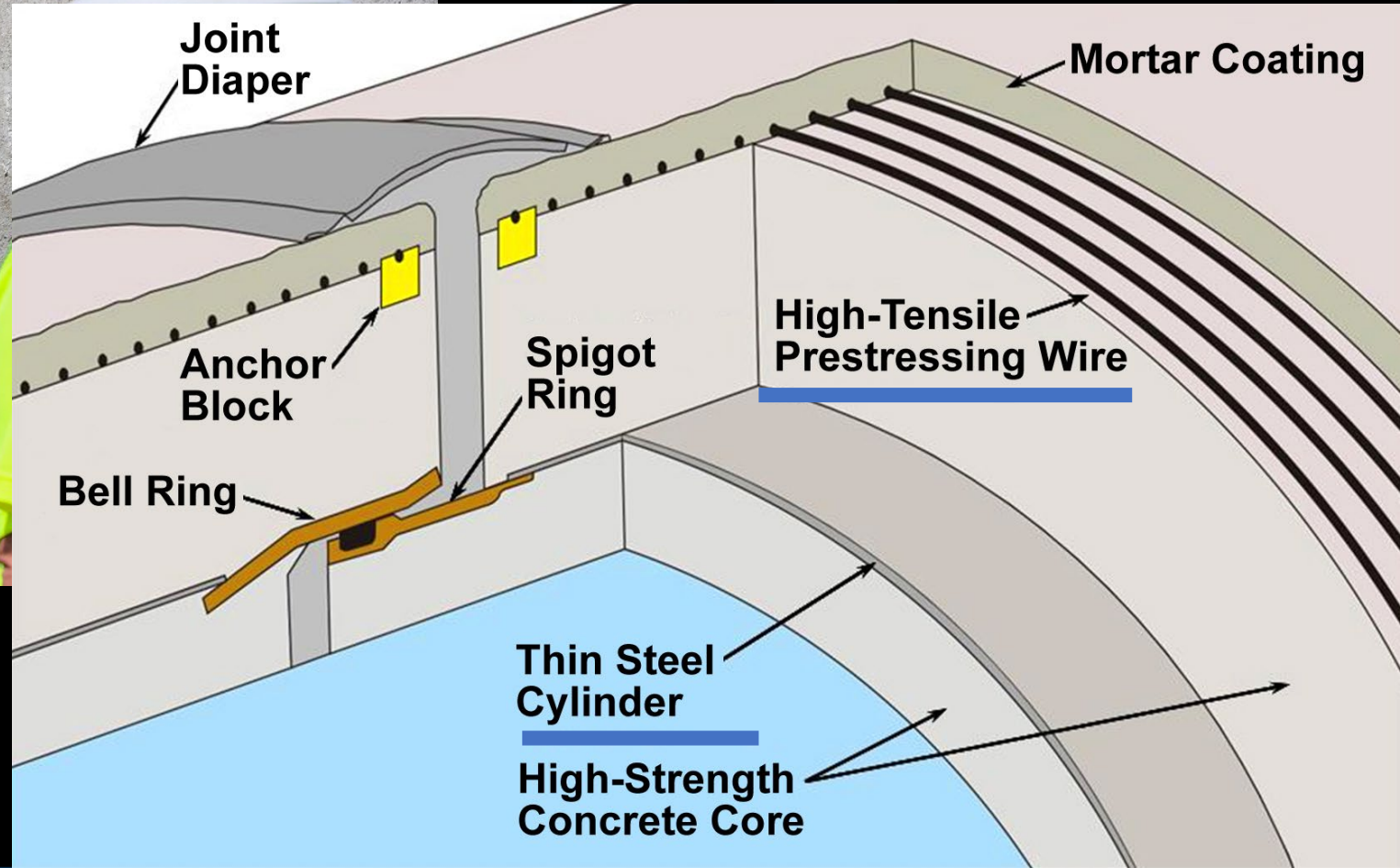
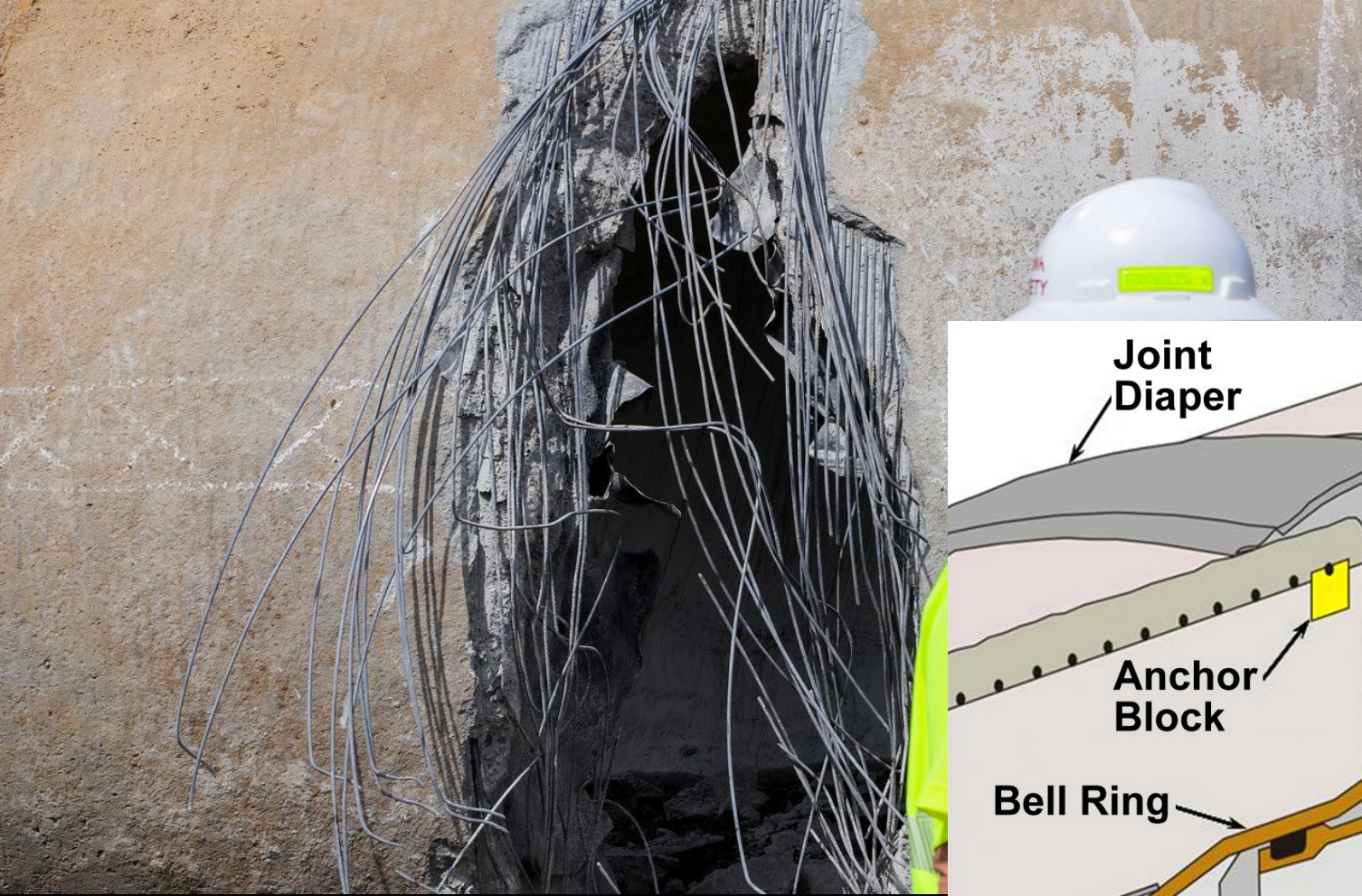


Pipeline 5 Relining San Luis Rey Canyon Project

Colin Kemper
Senior Engineer

July 16, 2024

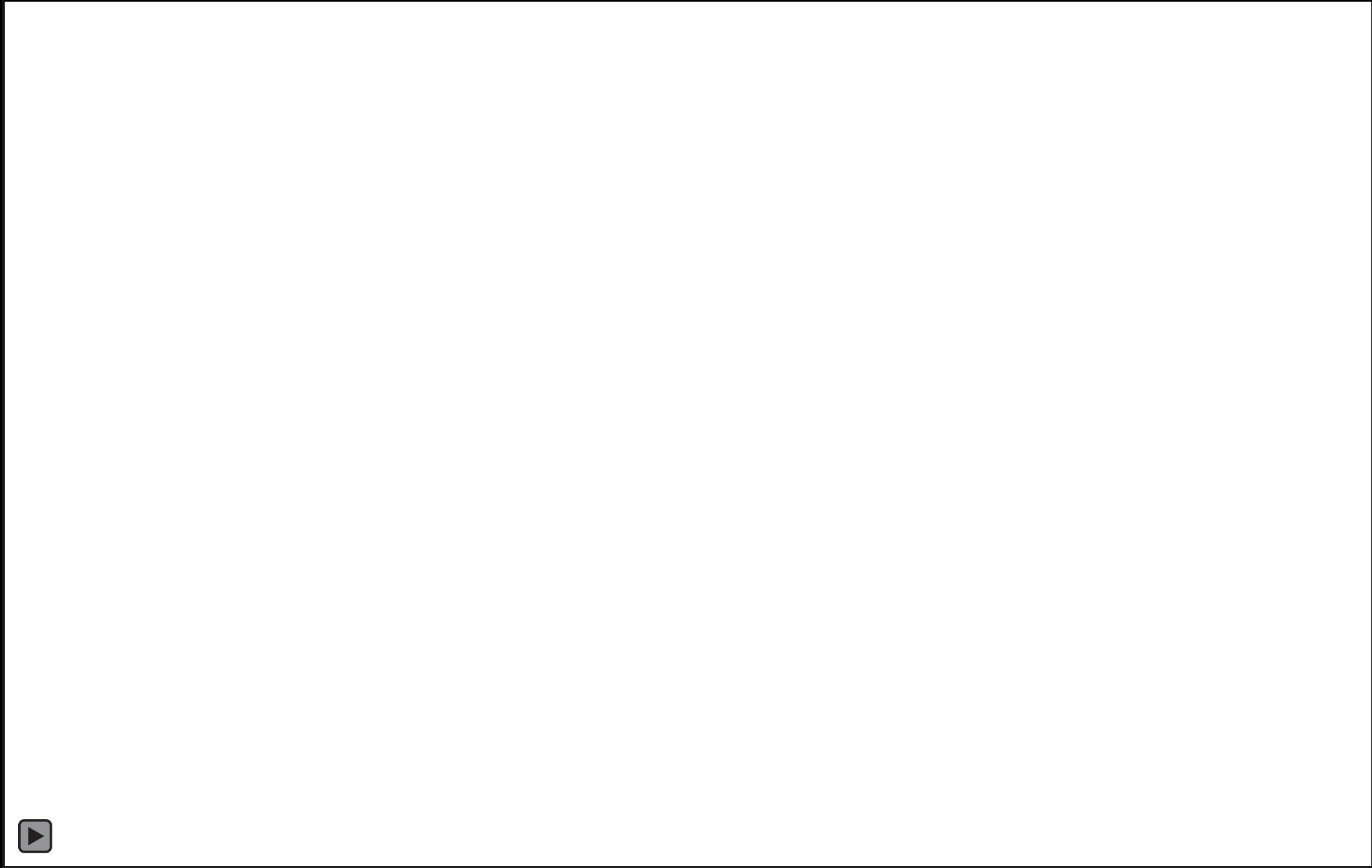




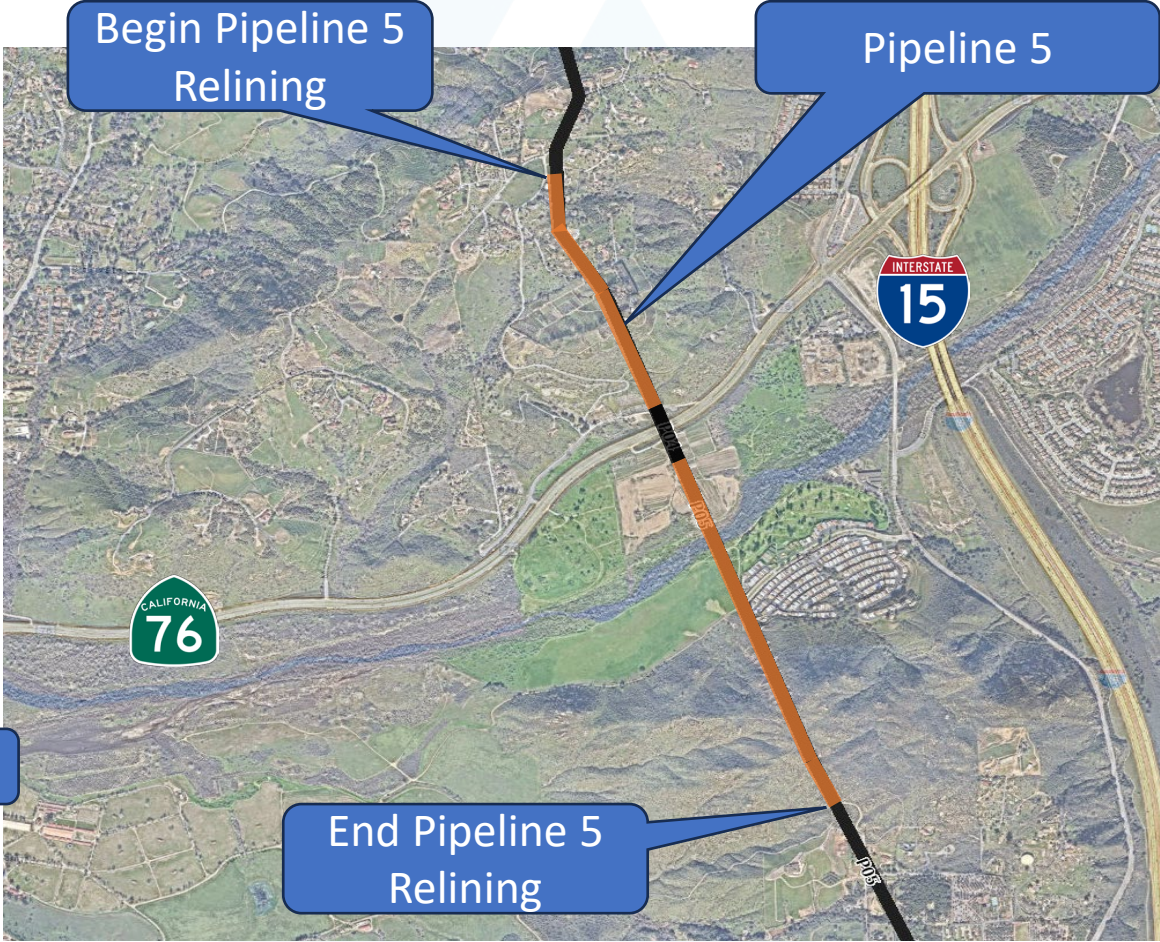
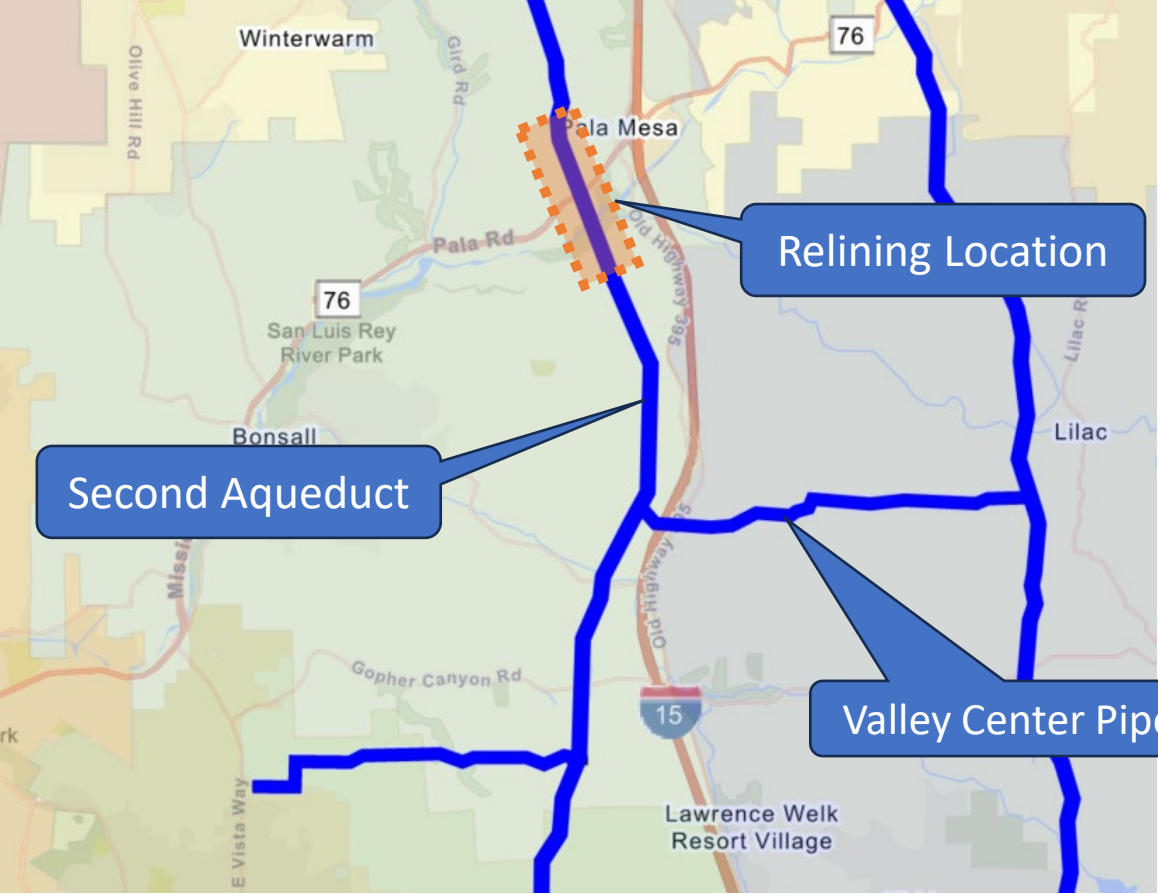


The Pipeline Relining Process





Project Vicinity and Location



Project Overview

- Approx. 9,000 linear feet
- Constructed in the early 1980s
- 96-inch Prestressed Concrete Cylinder Pipe (PCCP)



Portal

Sage Rd

Pipeline 5

Rainbow Municipal Water District

Portal

CM Office and Laydown Area

Pala Rd





Portal

Dulin Rd

Rancho
Monserate

Portal

Pipeline 5

INTERSTATE
15

Anticipated Construction Schedule

Construction Begins
September 2024

Pipeline 5 Isolation
Nov 2024

Pipeline 5 Relining

Pipeline 5 Reactivation
May 2025

Tentative Completion
Summer 2025

Construction Impacts



- Heavy machinery and construction crews on site.
- Work activity occurring Monday - Friday, 7 a.m. to 7 p.m.
- Saturday work may occur.
- 24-hour work during isolation and reactivation.

Community and Public Outreach

- 1-on-1 Stakeholder Outreach
- Interactive Project Map
- Direct Mail Postcard
- Media, Social Media, and Nextdoor
- Project Info Available in English/Spanish

San Diego County Water Authority

YOUR WATER PROJECTS & PROGRAMS IN THE COMMUNITY

PROJECT > PIPELINE 5 RELINING SAN LUIS REY CANYON

Pipeline 5 Relining San Luis Rey Canyon

The image displays two maps. The left map is a Google Maps satellite view of the San Diego region, with a blue location pin placed over the Rainbow area. The right map is a detailed project map titled "Pipeline 5 Relining San Luis Rey Canyon Project". It shows the project route from Fallbrook to Rainbow, with seven portals labeled from Portal 1 to Portal 7. The map also indicates the "Northern End of Relining" and "Southern End of Relining".

Thank You



<https://www.sdcwa.org/projects/pipeline-5-relining-san-luis-rey-canyon/>



877-682-9283, ext. 7005



CIPinfo@sdcwa.org



@sdcwa